

SOUNDS OF THE FUTURE

# Control 4 sets of WICE-M4 by USB Interface

## § Control 4 sets of WICE-M4 by USB Interface §

1. Load 512K x 8bits ( 4Mbits ) data to 4 WICE-M4.



2. Load 4 different 4Mbits data separately to 4 WICE-M4 by selecting 8 bit Every type.

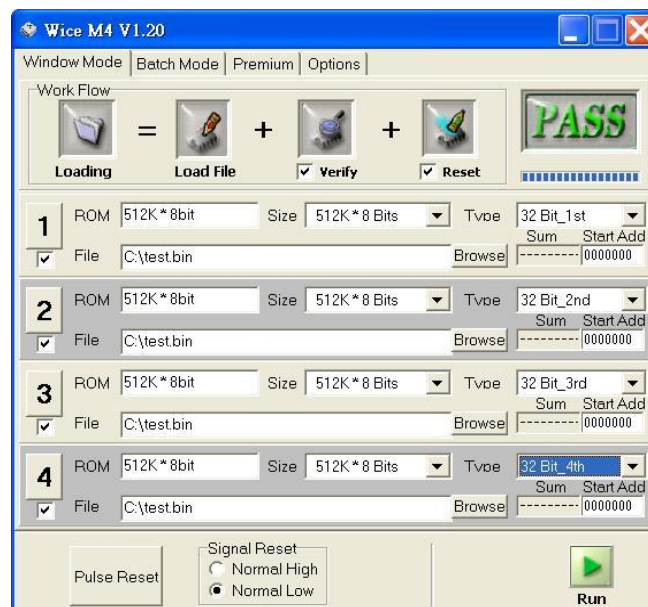


## § Control 4 sets of WICE-M4 by USB Interface §

3. Load 2 different 8Mbits data:
  - Load data 1 to 1<sup>st</sup> WICE-M4 by selecting 16 Bit\_Even type.
  - 2<sup>nd</sup> WICE-M4 by selecting 16 Bit\_Odd type
  - Load data 2 to 3<sup>rd</sup> WICE-M4 by selecting 16 Bit\_Even type.
  - 4<sup>th</sup> WICE-M4 by selecting 16 Bit\_Odd type.



4. Load 16Mbits data to 1<sup>st</sup> WICE-M4 by selecting 32 Bit\_1<sup>st</sup> type.
- 2<sup>nd</sup> WICE-M4 by selecting 32 Bit\_2<sup>nd</sup> type.
- 3<sup>rd</sup> WICE-M4 by selecting 32 Bit\_3<sup>rd</sup> type.
- 4<sup>th</sup> WICE-M4 by selecting 32 Bit\_4<sup>th</sup> type.



## § Control 4 sets of WICE-M4 by USB Interface §

### Identification of WICE-M4:

Select and press icon “1”, then the power busy light of 1<sup>st</sup> WICE-M4 will twinkle.

